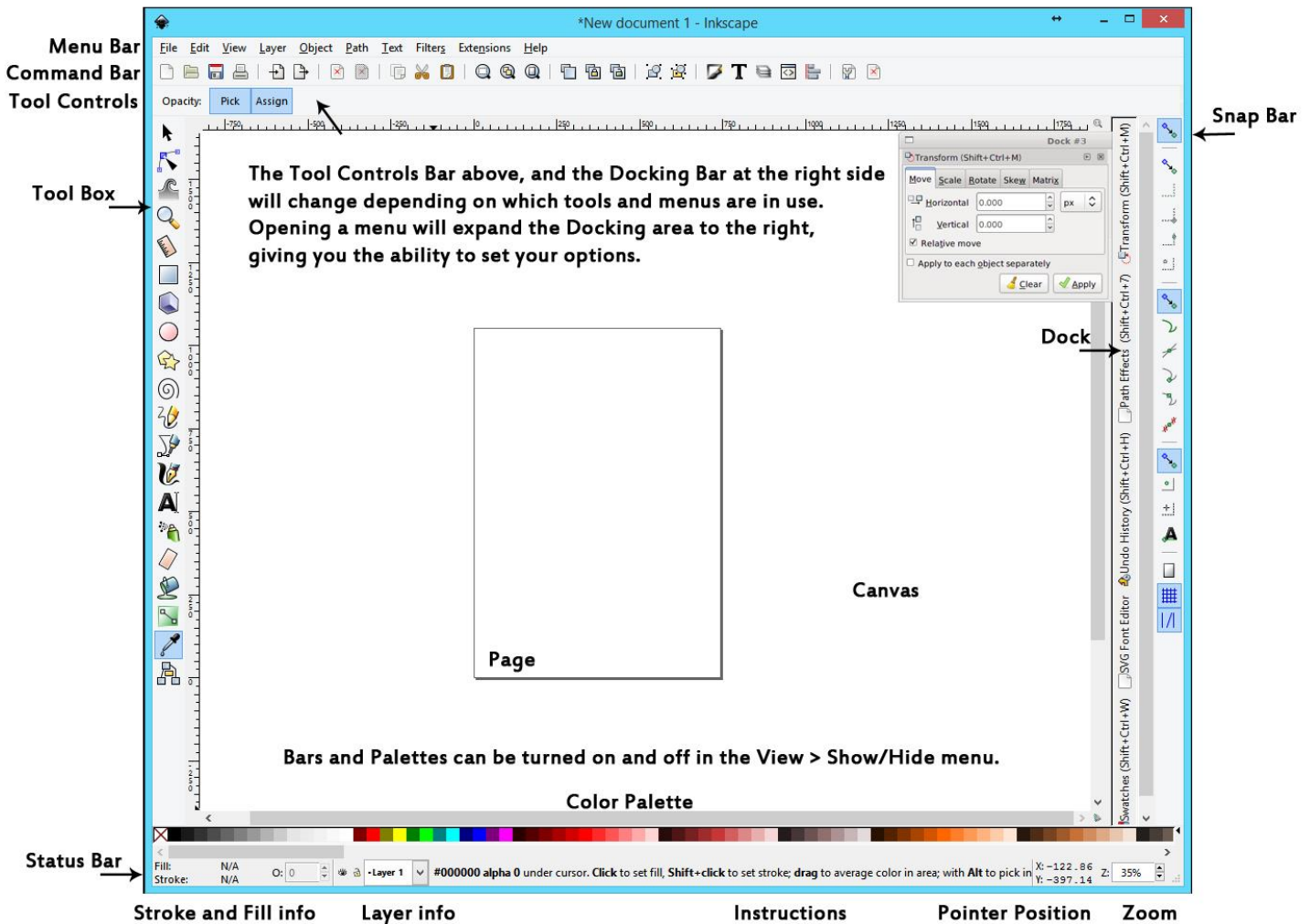


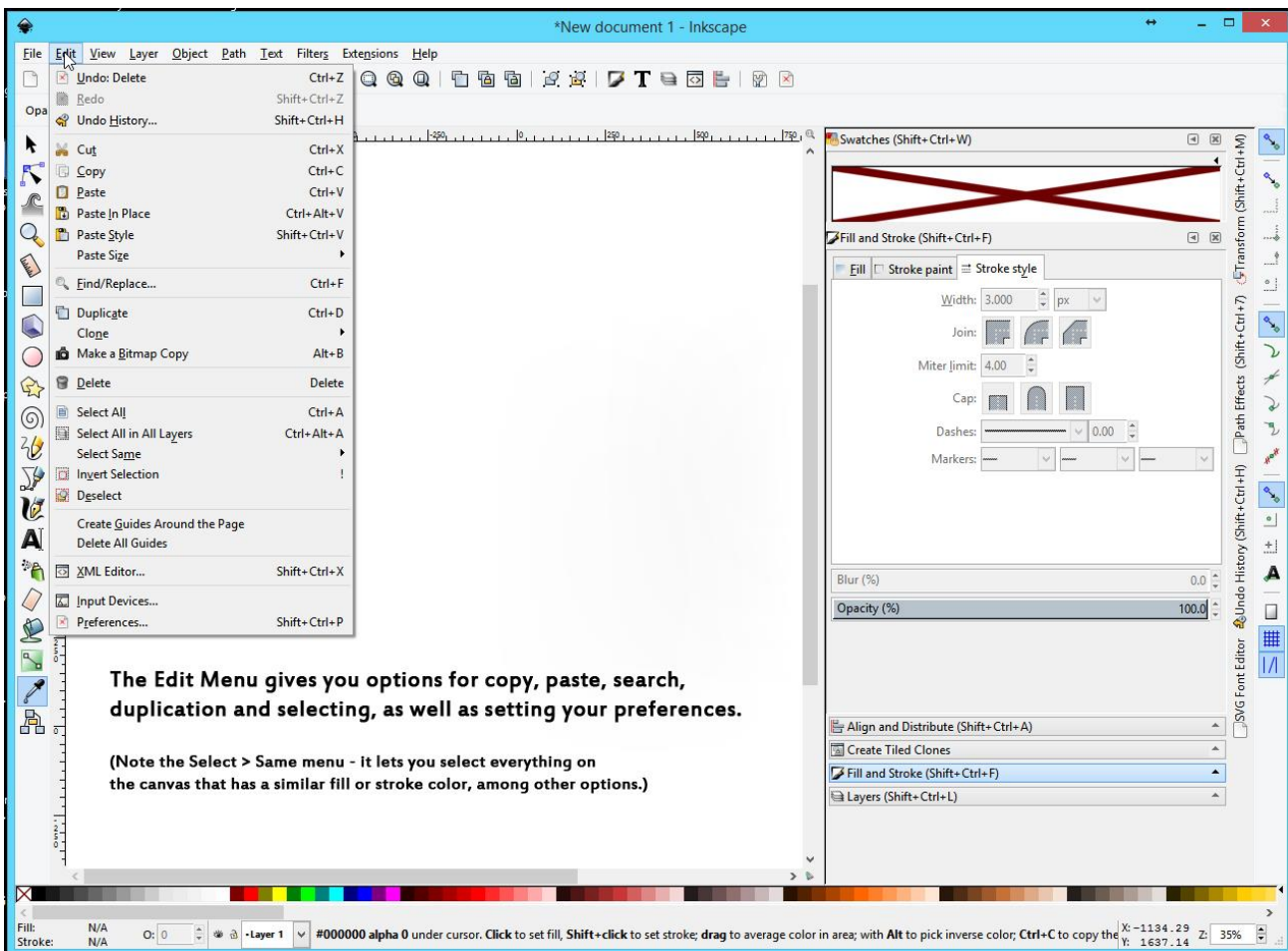
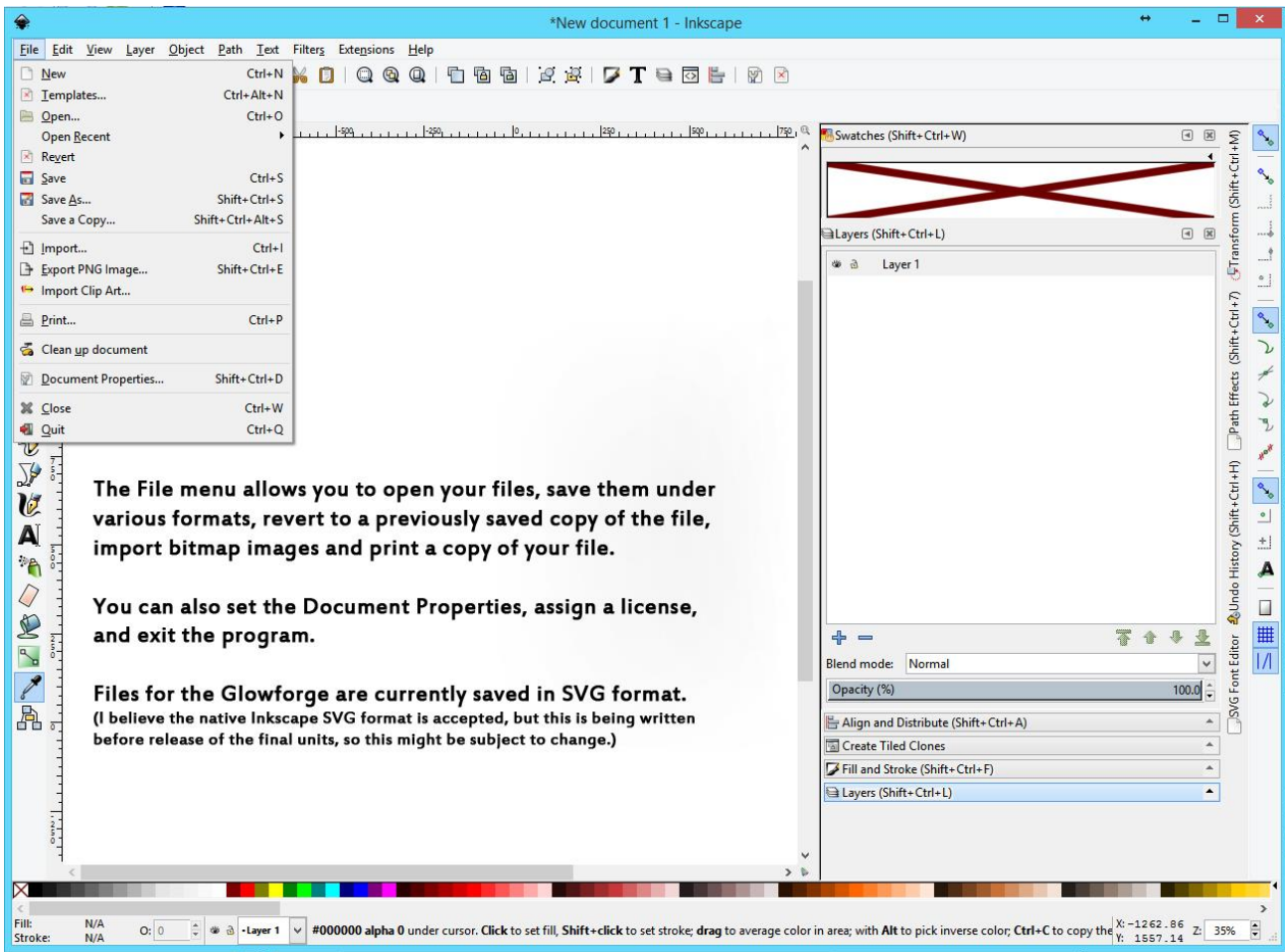
Inkscape – Tools Overview

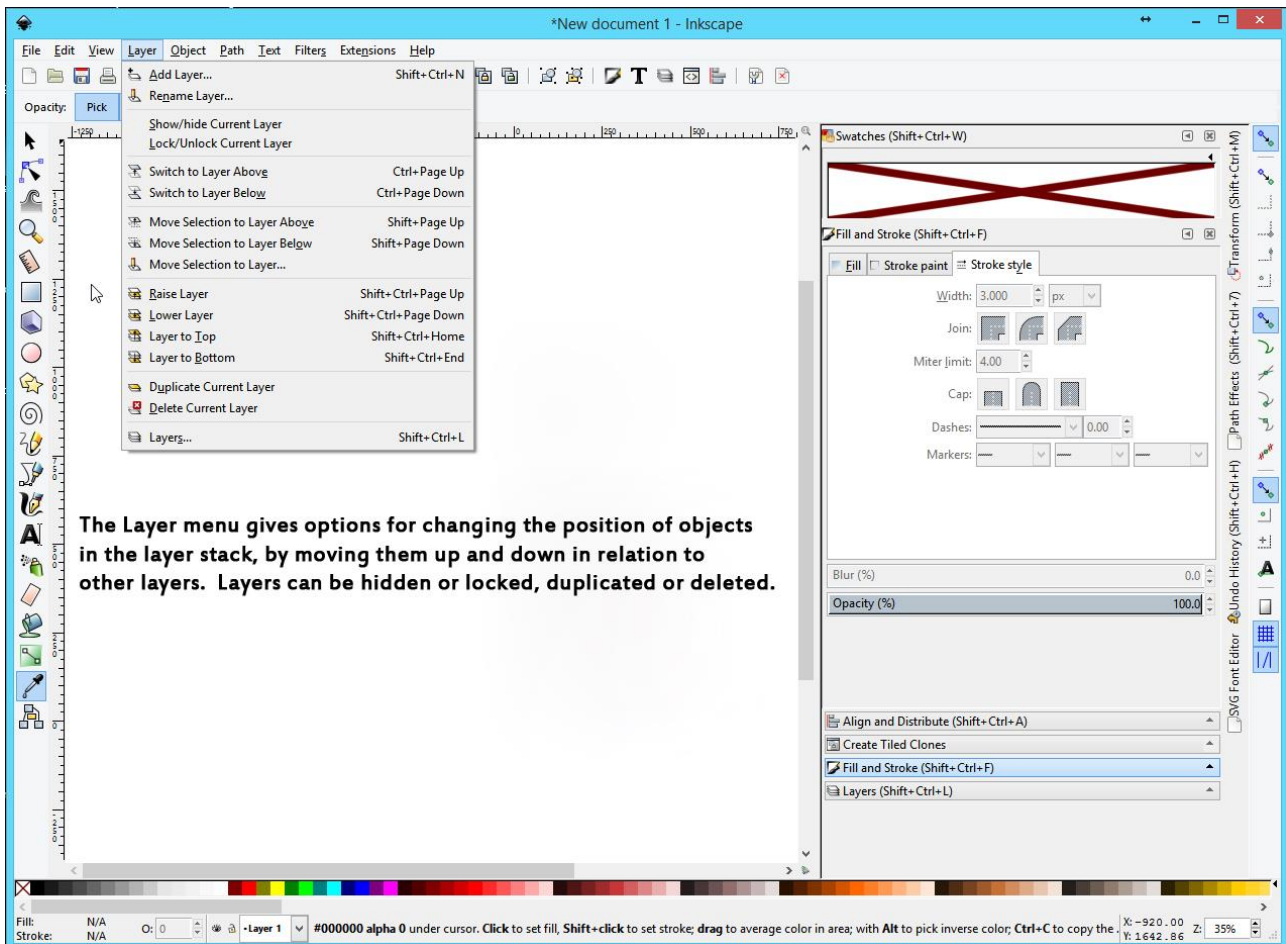
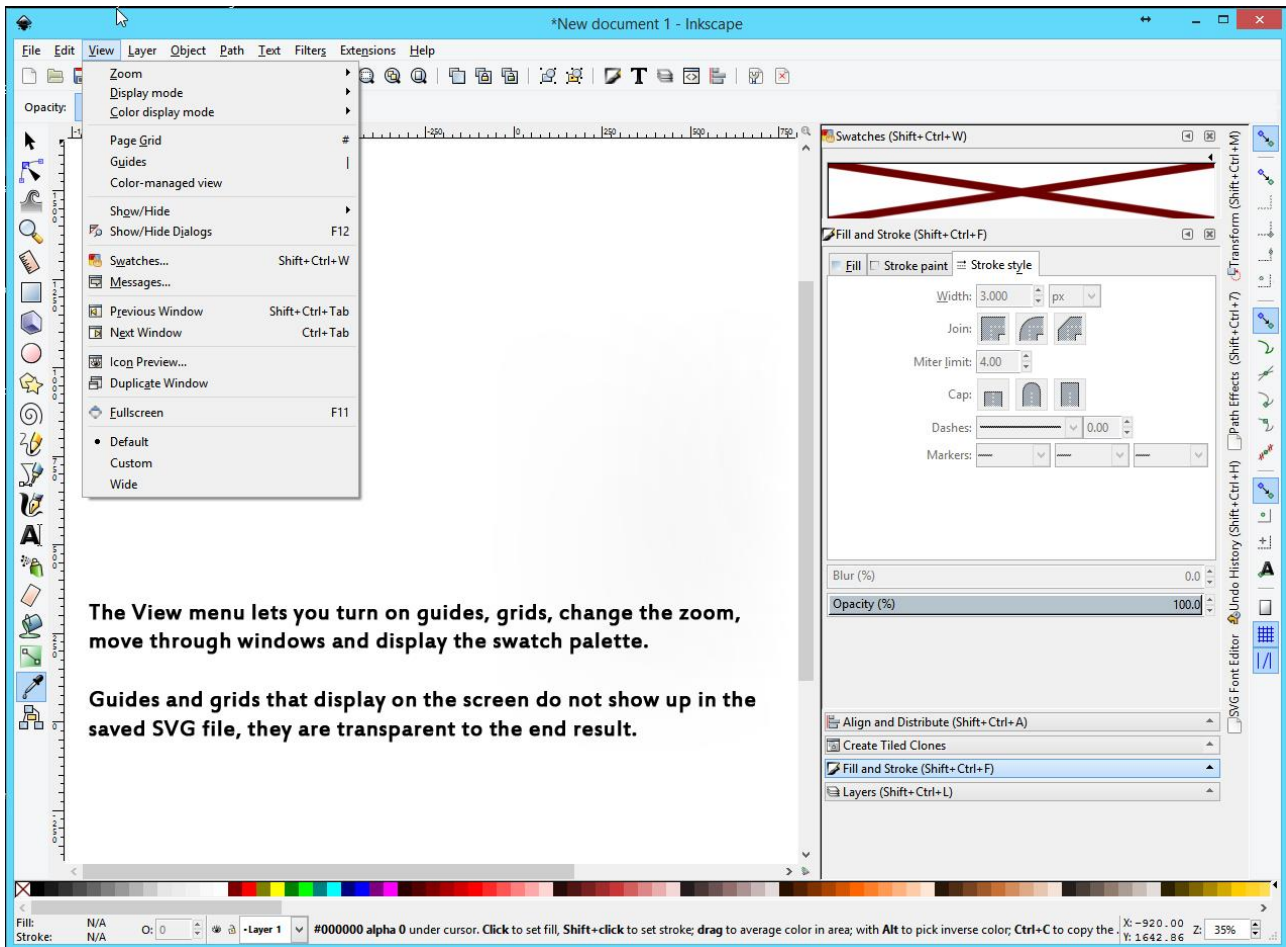
Inkscape has multiple menus to make the tools you need to use easy to access. It has a lot of options, is fairly intuitive, and one of the easier drawing programs to learn to use. The program has many extensions available to add functionality. Feel free to poke around and see what things do..... **CTRL+Z** will undo whatever you just did if you don't like it.

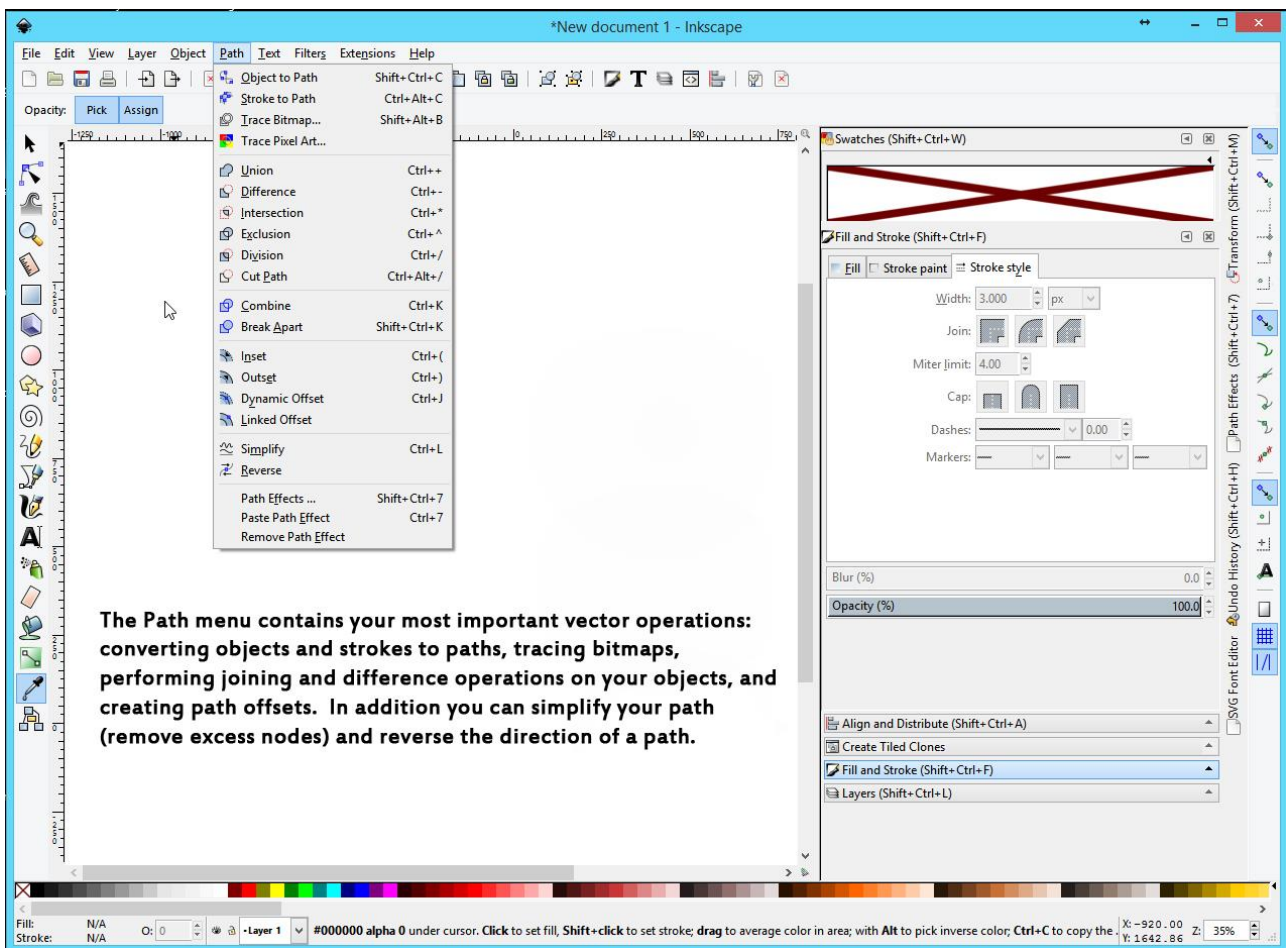
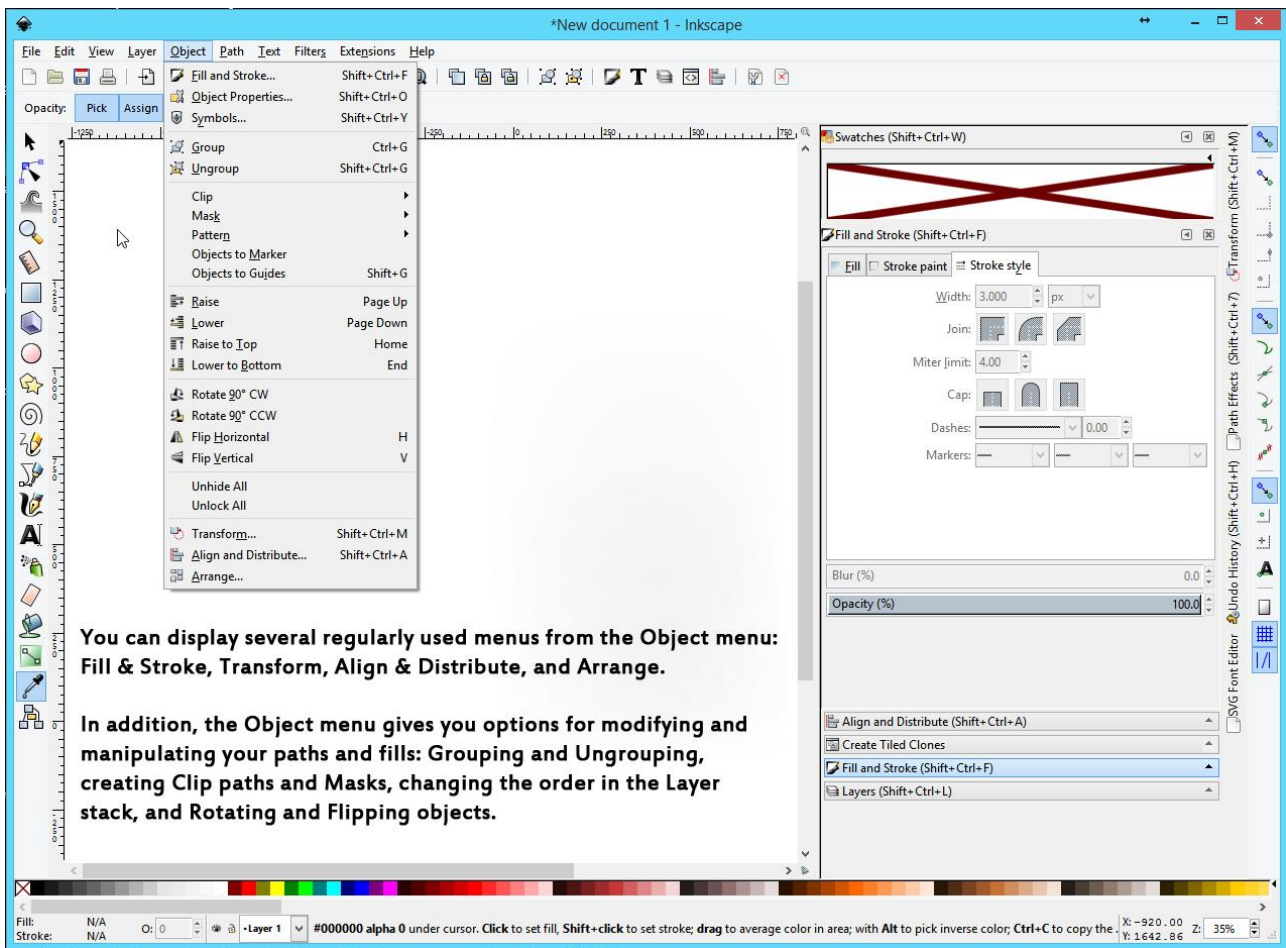


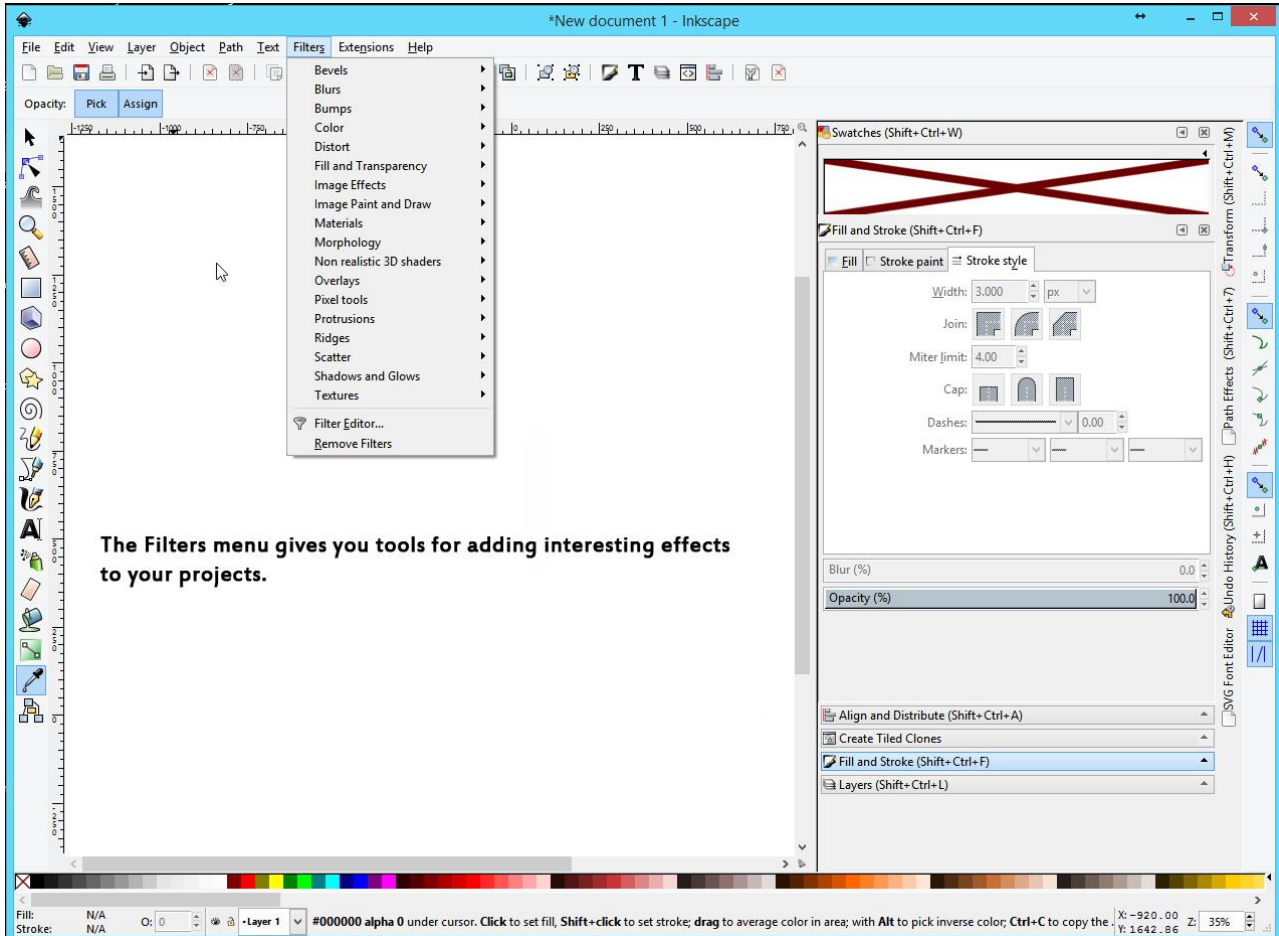
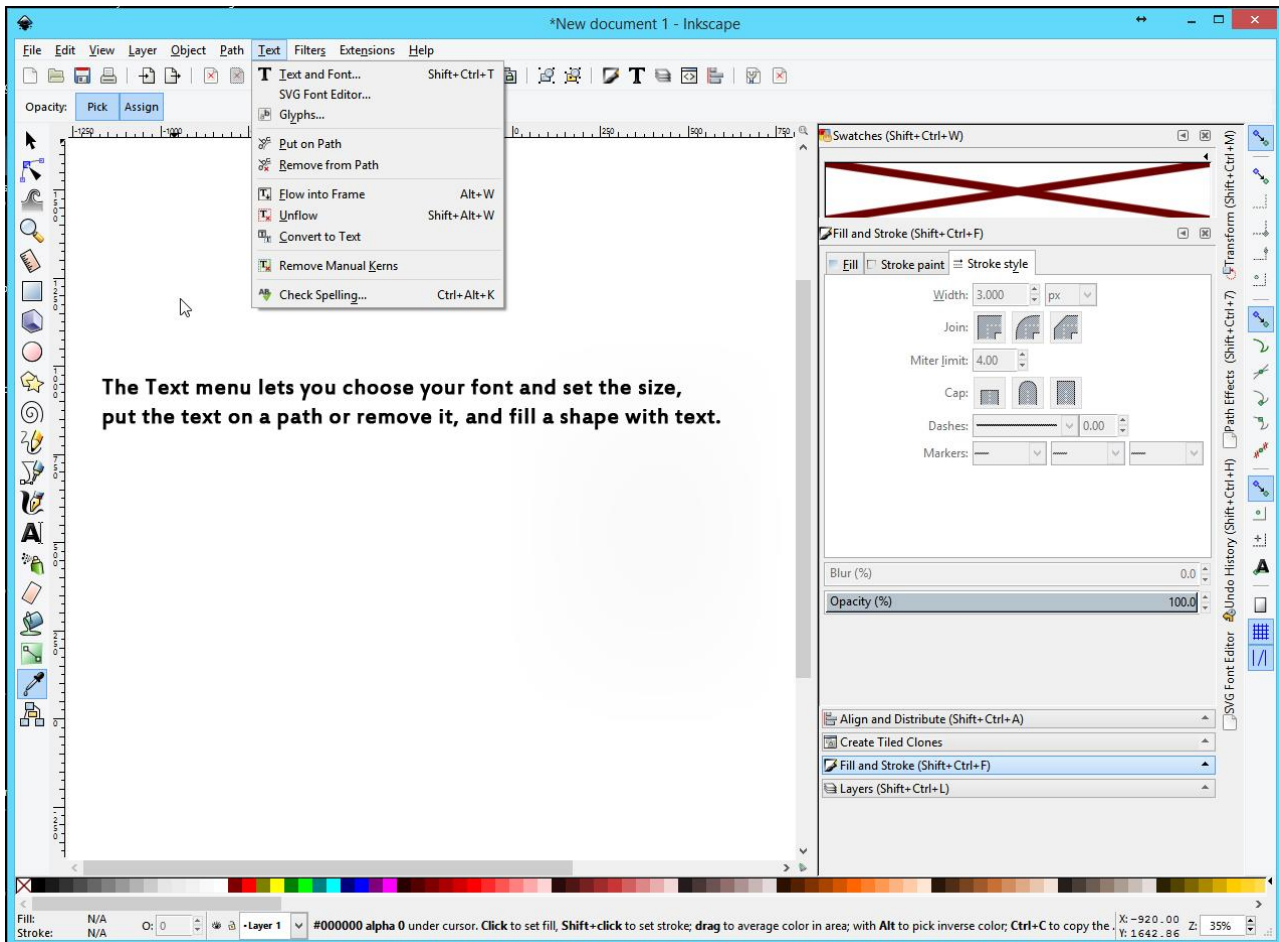
Make note of the Instructions area at the bottom of the screen...it lists tips for keyboard shortcuts while you are working that can speed up your work flow.

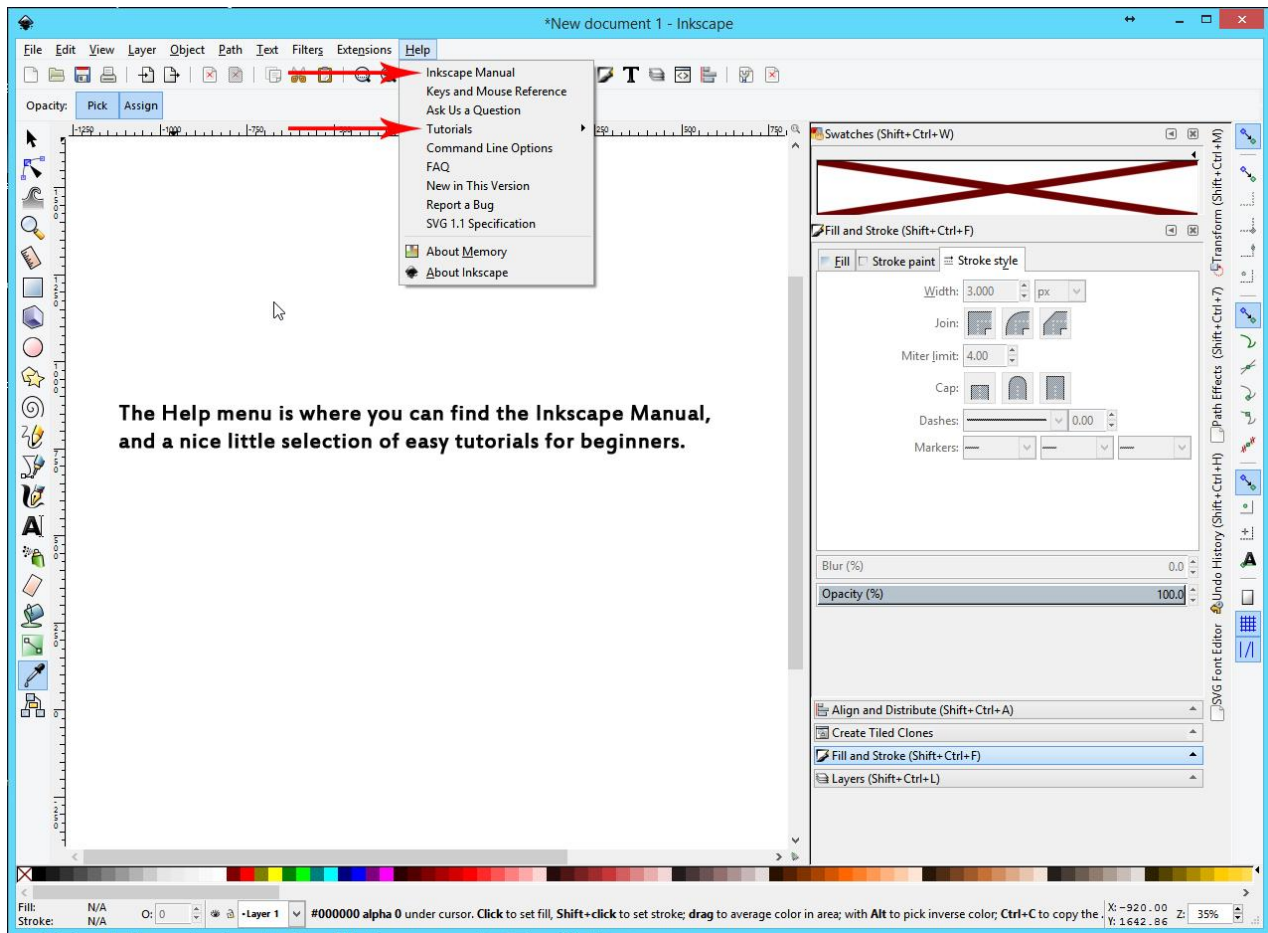
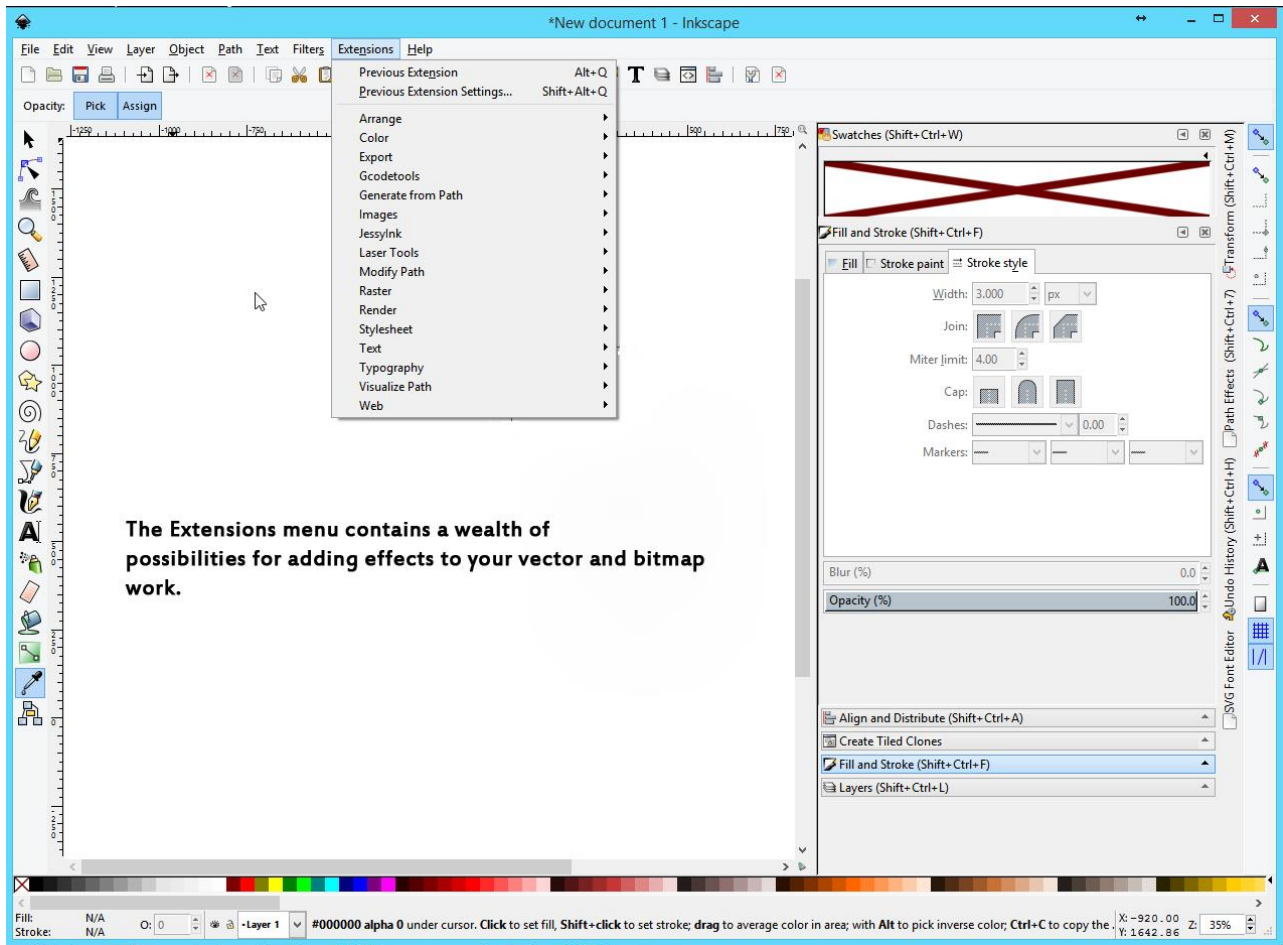
Let's start with the **Menus** in the **Menu Bar** (top row) – those are operational and apply to everything you do in Inkscape.



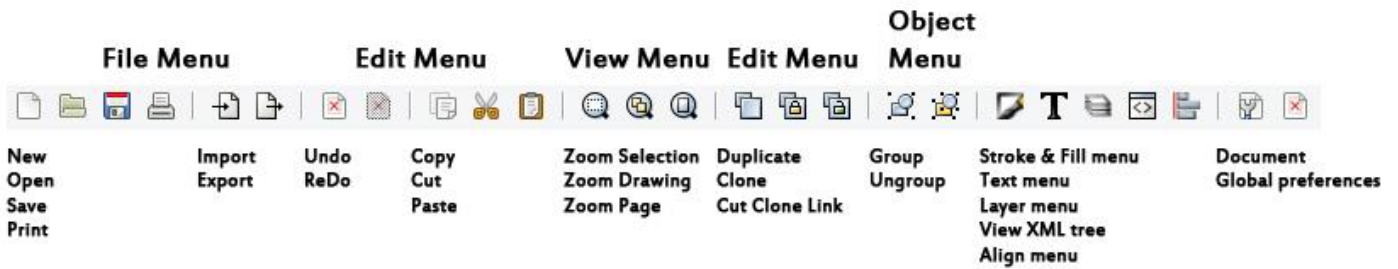








Icons that represent many of the various functions in the **Menu bar** menus will appear in the **Command bar** in the second row for ease of access while designing.



And a brief description of what each of the tools in the **Toolbox** does is available when you hover the mouse over the icon.

